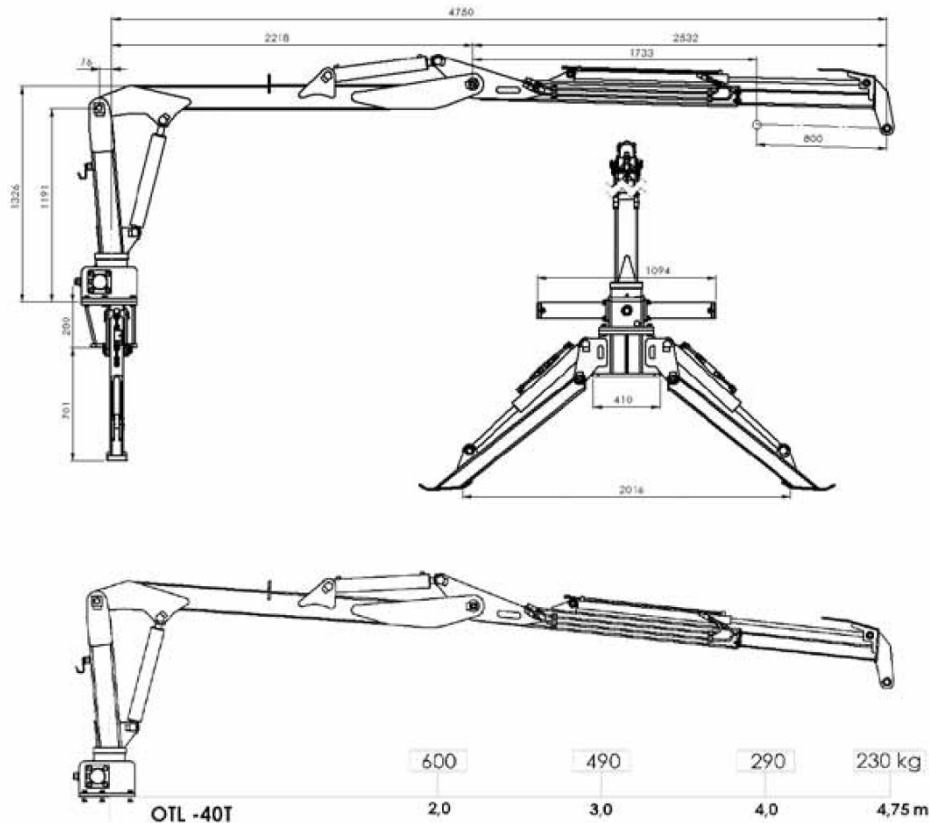




6.8 HYDRAULIC TIMBER CRANE OTL 40T



OTL 40T crane has been designed for performing technological works on forest areas during loading and unloading timber on forwarding and transportation vehicles. The crane is adapted to:

- attachment to an assembly plate of a loader or stabilizers improving stability of the set during work,
- work with tractors equipped with external hydraulic connectors or other system of hydraulic supply of specific parameters.

OTL 40T crane is to be mounted on trailers of 3000 kg payload. Construction of the trailer should provide a proper strength together with stabilizers – to provide stability during work.

The crane is for performing forestry (or agricultural) works. It is equipped with a timber grapple. It can be intended for ordinary loading and unloading works and it is forbidden to assemble a lifting hook at the end of the crane's arm.

TECHNICAL PARAMETERS

PARAMETER	DATA
Lifting torque:	
- Gross	20,4 kNm
- Net	16,8 kNm
Outreach:	
- Basic	3,95 m
- Maximum	4,75 m
- With telescopic extension	4,75 m
Lifting capacity:	
- @ 2,0 m net	600 kg
- @ 3,0 m net	490 kg
Slewing torque	8,0 kNm
Slewing angle	380°
Rotator torque	780 Nm
Rotator angle	Continuous
Grapple	
- Gripping area tip to tip	0,12 m ²
- Gripping width	198 / 232 mm
- Maximum opening	858 mm
- Minimum gripping diameter	Ø 35 mm
Grapple weight with link and rotator	85 kg
Total weight (with grapple, link and rotator)	630 kg
Working oil pressure	170 bar / 17,0 MPa
Recommended oil flow	20-40 L/min